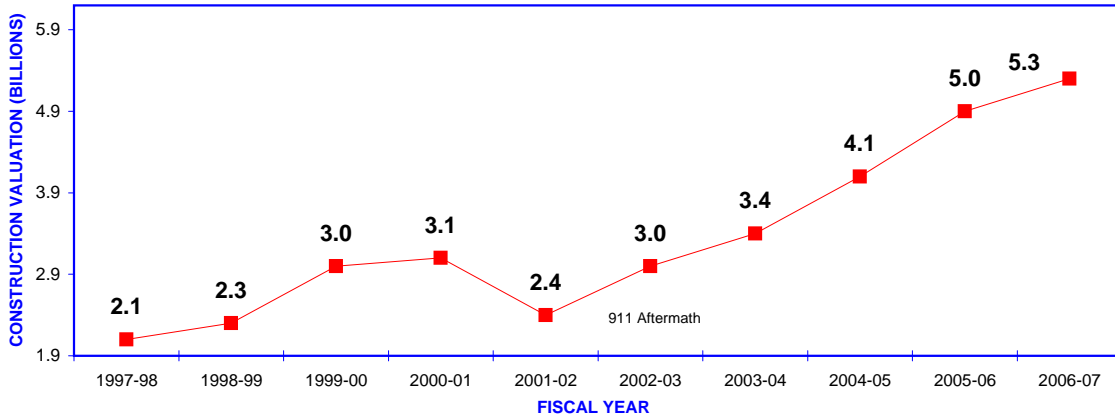




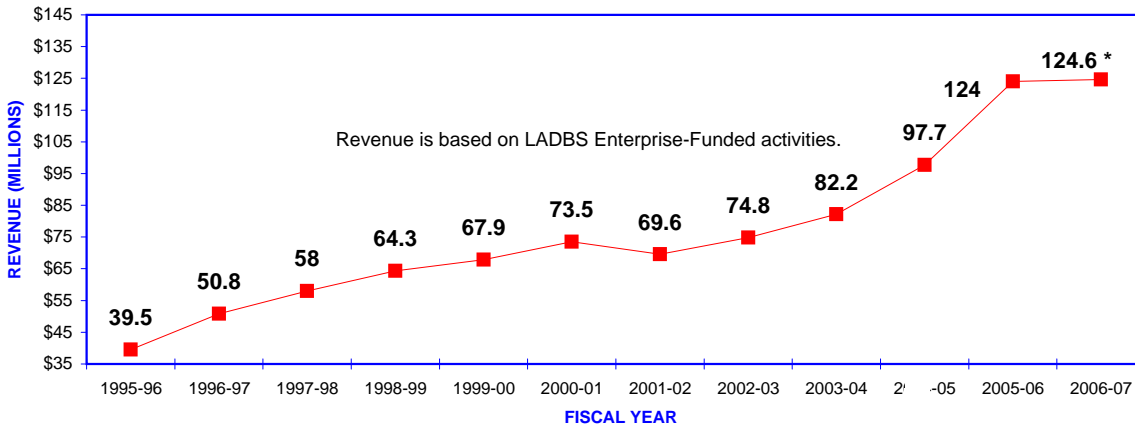
**LADBS BUILDING PERMIT ENTERPRISE FUND  
CONSTRUCTION ACTIVITY, REVENUE, AND STAFFING**

**CONSTRUCTION VALUATION**



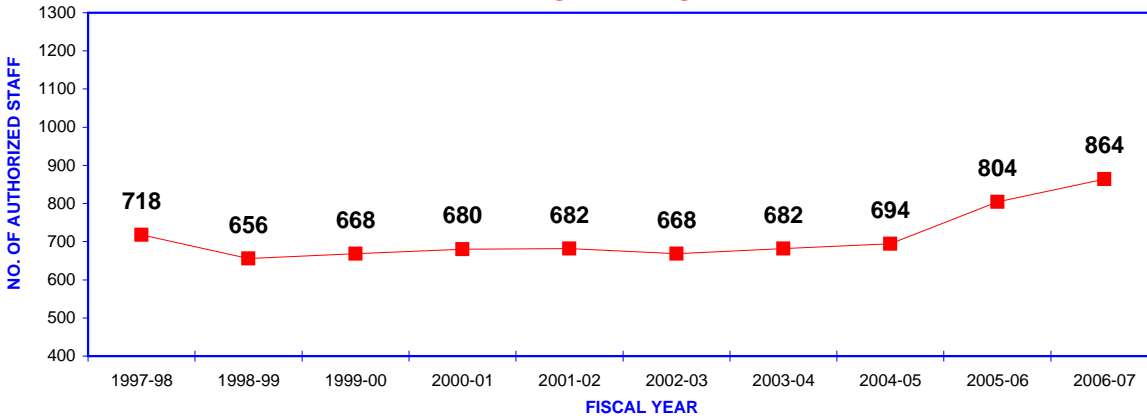
**97-98 TO 06-07  
INCREASE IS 152%**

**REVENUE**



**95-96 TO 06-07  
INCREASE IS 215%**

**STAFFING**



**97-98 TO 06-07  
INCREASE IS 20%**

\* Figure is tentative (actual figure may be slightly higher).